



PIMS

Last Mile Made Easy

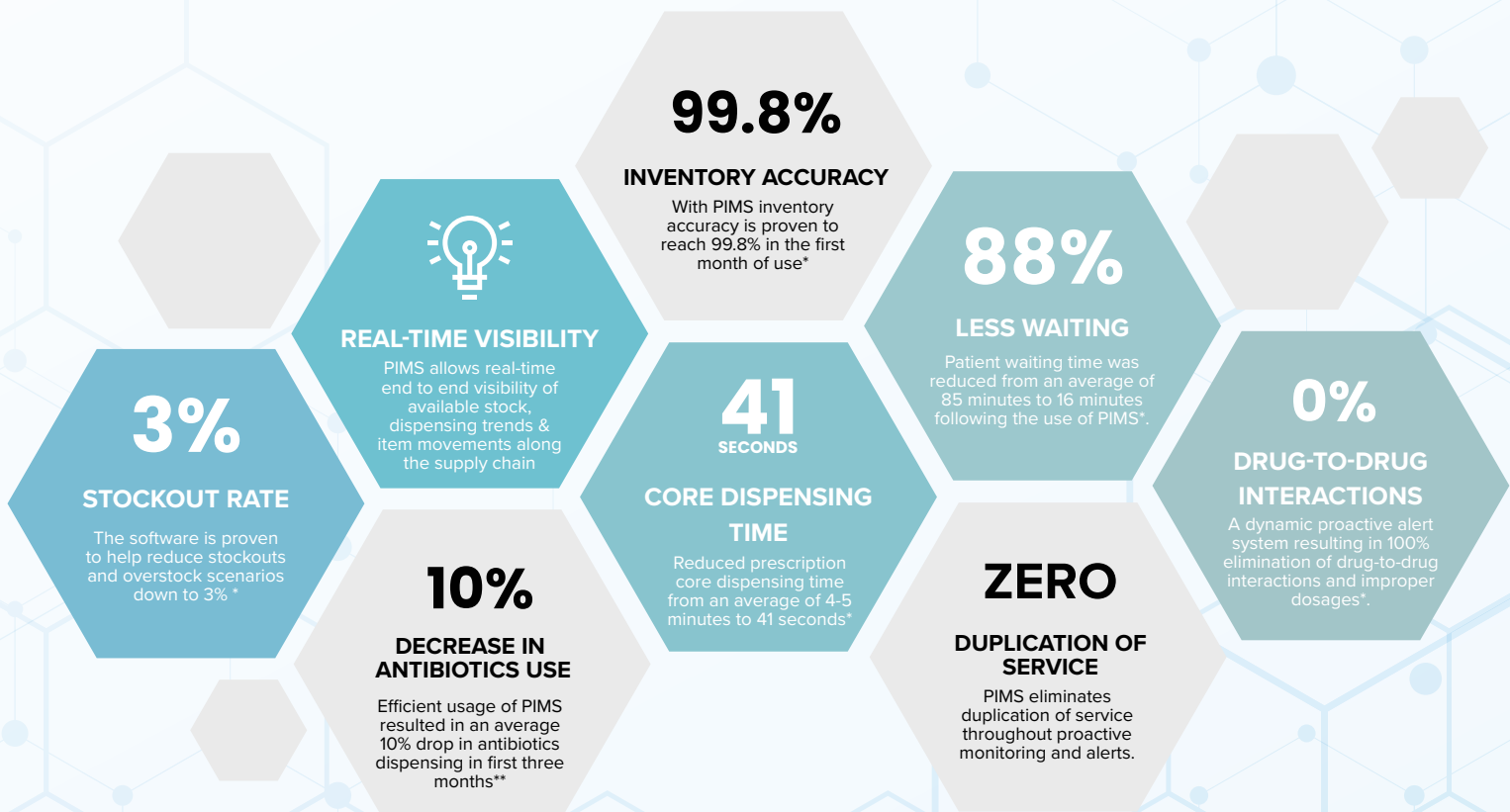
Last Mile Made Easy

Robust End-to-End Management & Control of Last Mile

International Medical Corps has designed, developed, and successfully deployed a pioneering interoperable software to manage the last mile of the supply chain. PIMS is a customizable, flexible, and fully integrated supply chain automation system that can help various industries maximize operational efficiency, better manage costs of operations, and provide a higher optimal level of patient care.

PIMS helps frontline health workers provide quality health service through applying principles of rational use of medicines, pharmacovigilance and pharmacoconomics. The amalgamation of real-time data in the software enables supervisors and managers to monitor available inventory and pipeline to replenish facilities in near real time. The application also provides users with actionable alerts, letting them know that stock is nearing expiration, as well as overstock and understock scenarios making the resupply process simple and efficient. PIMS improves cold chain management by detecting items that are at risk due to storage conditions and provides alerts. The software can be hosted on cloud or local environments making it flexible and functionally diverse in humanitarian contexts. It is built to work offline, allowing the software to operate in challenging environments with limited infrastructure.

The software is designed to capture key data at every level of the last mile of the supply chain, empowering users to make data-driven decisions and plan better. It provides unparalleled visibility, analytics, and optimization of supply chain management, both in desktop and mobile versions. It drastically reduces administrative and support costs by improving accuracy, limiting human errors, and maximizing resources. The application flags duplication of services, thereby reducing patient care costs and lowering operating margins. These efficiencies and cost savings can directly and positively impact targeted population.



* Impact in South Sudan

** Impact in Yemen

Why PIMS?

Maximal Efficiency, High Visibility & Tailored for Low Resource Settings

PIMS modernizes the pharmaceutical supply management processes and brings 21st century technology to austere environments. It eliminates time consuming labor-intensive manual spreadsheet dominated practices and procedures, resulting in greater efficiency, and streamlined operations. It increases transparency to medical practitioners, Ministries of Health, and Donor Agencies; and allows healthcare practitioners more time to focus on patient's health.

PIMS helps frontline health workers provide quality health service by applying principles of rational use of medicines, pharmacovigilance, and drug utilization reviews. It is a customizable, flexible and fully integrated pharmacy automation system that can help organizations maximize operational efficiency, better manage costs of operations and provide a higher level of patient care.



Maximal Accuracy & Visibility

Renders multi-location reports and stock status in real-time, enabling organizations to have timely access to information, minimize stockouts, prevent waste and manage their inventory efficiently.



Online & True Offline Capabilities

Capable of functioning as a cloud-based system or can function entirely offline, enabling organizations to quickly adjust to various operational environments.



Faster Pharmacy Operations

Reduces dispensing time by up to 88%, freeing up time for pharmacists to counsel patients and practice rational dispensing including pharmacovigilance.



Proactive Alerts System

Equipped with interactive dashboards and alert mechanisms that engage decision makers when needed through in-system alerts or SMS and email notifications.



Productivity Integrations

PIMS seamlessly connects with a diverse range of solutions and services, encompassing the management of cold chain items and the effective monitoring of logistics pipelines, leveraging real-time 4PL data.



Significant Reduction in Stockouts

Automates resupply requests and allows morbidity and consumption-based forecasting and quantification. It reduces the amount of stockouts through real-time consumption monitoring and proactive alerts.



Robust Reporting & Query Builder

Equipped with a robust reporting engine with custom query building and custom reports, empowering teams to quickly access information without depending on technical teams.



Multilingual for Desktop & Mobile

The platform can function in multiple languages on desktop and mobile devices with minimum technical requirements, enabling organizations to utilize preexisting IT infrastructure.



Multi-Grant & Location Management

Can manage multi-grant and multi-location projects without adding burden on users. It seamlessly tracks different commodities across various locations in real-time.



All types of commodities

The platform efficiently manages pharmaceuticals, health & nutrition supplies, vaccines, food and non-food items and further extends to manage all types of emergency kits.

No Data Loss, Android Version For Mobile Devices

PIMS features a robust synchronization center that can transfer data through various channels. The software operates seamlessly in offline mode, enabling data transfers via network, file transfer, or even paper-based methods. Additionally, PIMS is compatible with Android mobile devices.



Scalable & Customizable Modular Design

Versatile Features Adhere to Best Practices

Comprehensive Modules

✓ Rationalization

- Morbidity-based quantification
- Pre-loaded Protocols
- Pareto & ABC Analyses
- Preloaded Pricelists
- Excel Quantification Extraction

✓ Items & Kits

- Barcoded Items Definition
- Standardized Product Coding
- Multi-grant Management
- KITs Management
- GS1 compatible

✓ Dispensing

- Barcode Items Dispensing
- Drug Utilization Reviews
- Duplication of Service Alerts
- Patients Prescriptions History
- HIS Data Support

✓ Goods Receipt

- Automated Approvals
- Electronic Signatures
- Supplier Tracking
- Offline Waybill Revealal
- QR-code Waybills

✓ Transfers

- Internal Transfers
- External Dispatches
- QR-Code Waybills Export
- Partial Revealal
- Offline Exchange

✓ Automatic Resupply

- Automated Resupply Requests
- Emergency Requests
- Corrected Consumption Mode
- Seasonal Analysis
- Grant Approvals & Control

✓ Inventory Reconciliation

- Periodic & Spot Checks
- Damaged & Lost Items
- Offline Physical Inventory
- Inventory Corrections
- Justifications & Approvals

✓ Planning & Cold Chain

- Pipeline Visibility via 4PL
- Shipment Tracking
- Cold Chain Monitoring
- Ambient Temp Monitoring
- Alerts & Cause Logging

Other Features

✓ Data Protection

- ePHI Access Logs
- Security and Compliance
- De-identified Patient Profiles

✓ Performance

- Fast Responsive Screens
- Minimal Specs Needed
- Low-Bandwidth Consumption

✓ Notifications

- In-System Notifications
- Email Notifications
- Custom Notifications

✓ Reporting & Dashboards

- Configurable Dashboards
- Pre-Prepared Reports
- Custom Query Builders

✓ Interoperability

- HL7 Interoperable
- Built-in API
- DHIS2 API
- Interoperable with ERPs

✓ UX/UI

- Multi-Lingual Interfaces
- 92.5 SUS Score
- Responsive Interfaces
- Consistent Interfaces

✓ Security

- Encrypted Sensitive Attributes
- Anti-XSS, Anti-SQL Injection
- Role-Based Access Control
- Custom Roles & Permissions

✓ Support

- Online Support Desk
- In-System tutorials
- Multi-Lingual Manuals

Easily deployable in three simple steps.

Our deployment strategy is straightforward yet highly efficient. It follows a three-step process: first, gaining a deep understanding of practical considerations; then, constructing an implementation based on quality standards; and lastly, preparing and facilitating readiness for final use.

